

CV6 INSTALLATION GUIDE



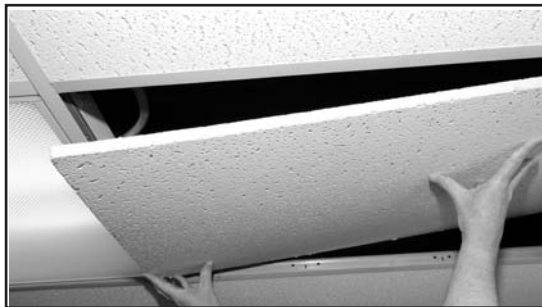
◀ TOOLS RECOMMENDED FOR INSTALLATION

- A hole saw
(Rotozip® SCS01 Spiral Saw - shown).
- A #2 cross-tip screwdriver
(or a powered screwdriver with a
#2 cross-tip bit - not shown).
- A mini standard blade screwdriver
(or a mini cross-tip - not shown).

STEP ONE ▶

Remove ceiling tile.

NOTE: Confirm a minimum of 8.5 in.
(216 mm) of clearance above the
ceiling is available for the speaker
enclosure.



◀ STEP TWO

NOTE: The center of the
mounting hole **must** be fixed
at a point halfway across the
width of the ceiling tile, and
located for a desired spacing
along the length of the tile.

Cut an 8.875 in.
(226 mm) diameter circular
hole, referencing this
center point.

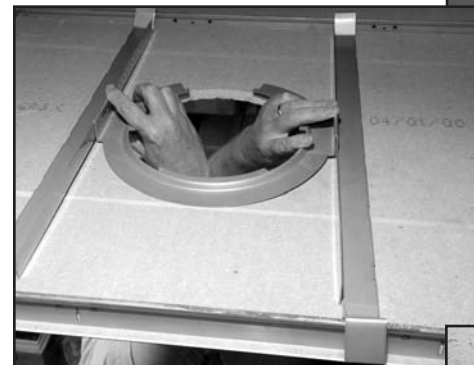


◀ STEP THREE

Replace tile.

STEP FOUR ▶

Place C-ring and both Support
Brackets through hole onto the
top of the tile.



◀ STEP FIVE

Assemble C-ring to Support
Brackets, align with hole, and
secure with two of the supplied
sheet-metal screws.

STEP SIX ▶

Feed CAT5E cable(s) through C-ring
and mounting hole.

NOTE: One cable will channel digital-audio
and power from the source unit to the first
speaker. The next cable will connect the
first speaker to the second speaker. Use
cables to connect from one speaker to the
next (in a daisy-chain configuration), or
to link to the next power source unit. A
maximum of 8 speakers can be connected
to each power source unit.

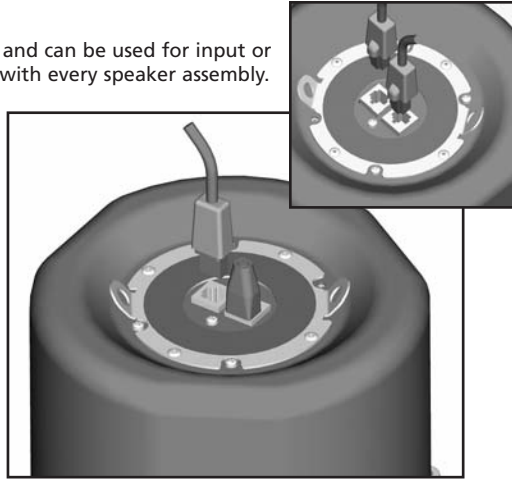


STEP SEVEN ▶

NOTE: Both RJ45 connectors are identical and can be used for input or output. One termination-plug is supplied with every speaker assembly.

Snap CAT5E plug into the open RJ45 connector of the speaker.

If the speaker is linking to another speaker, remove the termination-plug, then snap the other CAT5E plug into that RJ45 connector. **If the speaker is the final device in the distributed system, the termination-plug must remain installed in one of the RJ45 connectors.**

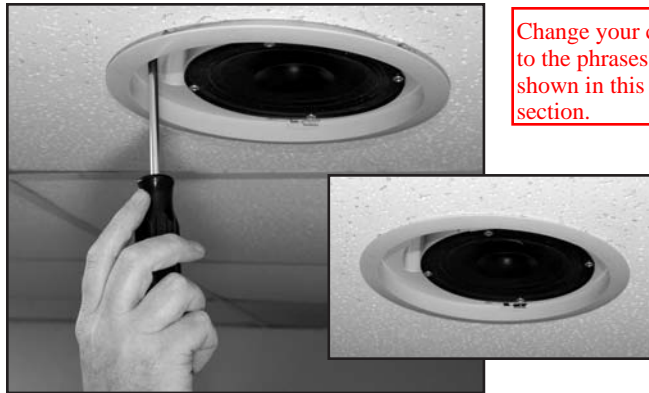


◀ STEP EIGHT

With the clamps aligned to the slots in the C-ring, push speaker assembly and cable(s) up through the hole.

STEP NINE ▶

With top side of flange against tile, twist the speaker assembly clockwise until it stops. Then carefully verify that it is held intact by the C-ring and tighten all three clamps firmly, but do not over-tighten.

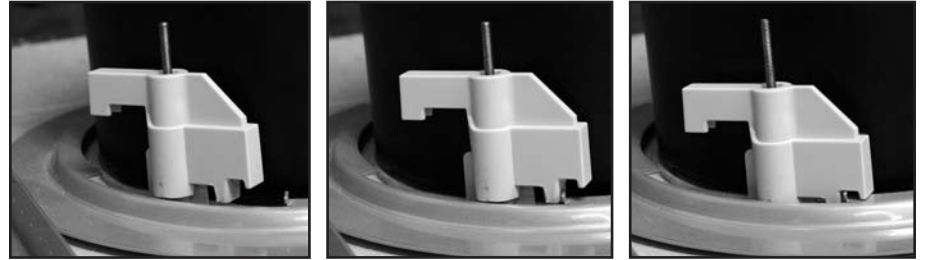


Change your copy to the phrases shown in this section.

CLAMP DETAIL ▼

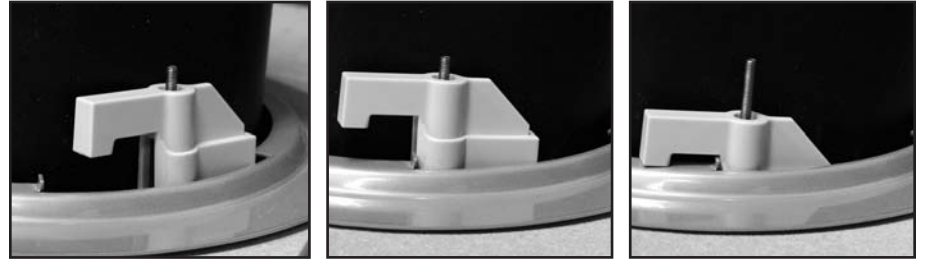
NOTE: Clamps are made with three tiered stages, for use with ceilings up to 2 in. (51 mm) thick. If C-ring suspension cannot be confirmed in step nine, twist the speaker assembly **counter-clockwise** until it stops. Then carefully verify that it is held intact by the C-ring and tighten all three clamps firmly, but do not over-tighten. The direction of rotation and the suitable tier are determined by the thickness of the ceiling material.

Standard 0.63 in. (16 mm) thick ceiling tile



View of clamp (from above tile) as speaker assembly is rotated clockwise until it stops, then clamp is tightened.

Non-Standard 1.75 in. (45 mm) thick ceiling



View of clamp (from above tile) as speaker assembly is rotated counter-clockwise until it stops, then clamp is tightened.

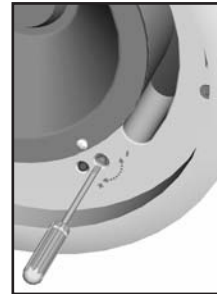
◀ STEP TEN

Adjust each unit's volume control to the desired level.

STEP ELEVEN ▶

Insert grille into recessed cavity and twist clockwise to snap into place.

NOTE: The bezel of the optional DG1 (Designer Grille) and RG1 (Regressed Grille) extends to cover the enclosure flange.



DRYWALL OR PLASTER

NOTE: When installing the CV6 into materials other than suspended ceiling tile, disregard steps one and three, plus adapt steps two, four, and five as necessary (C-ring or optional Plaster Ring is mandatory). As required with suspended ceiling, CAT5 cables must be routed from above ceiling and a minimum of 8.5 in. (216 mm) of clearance above the ceiling must be provided.